

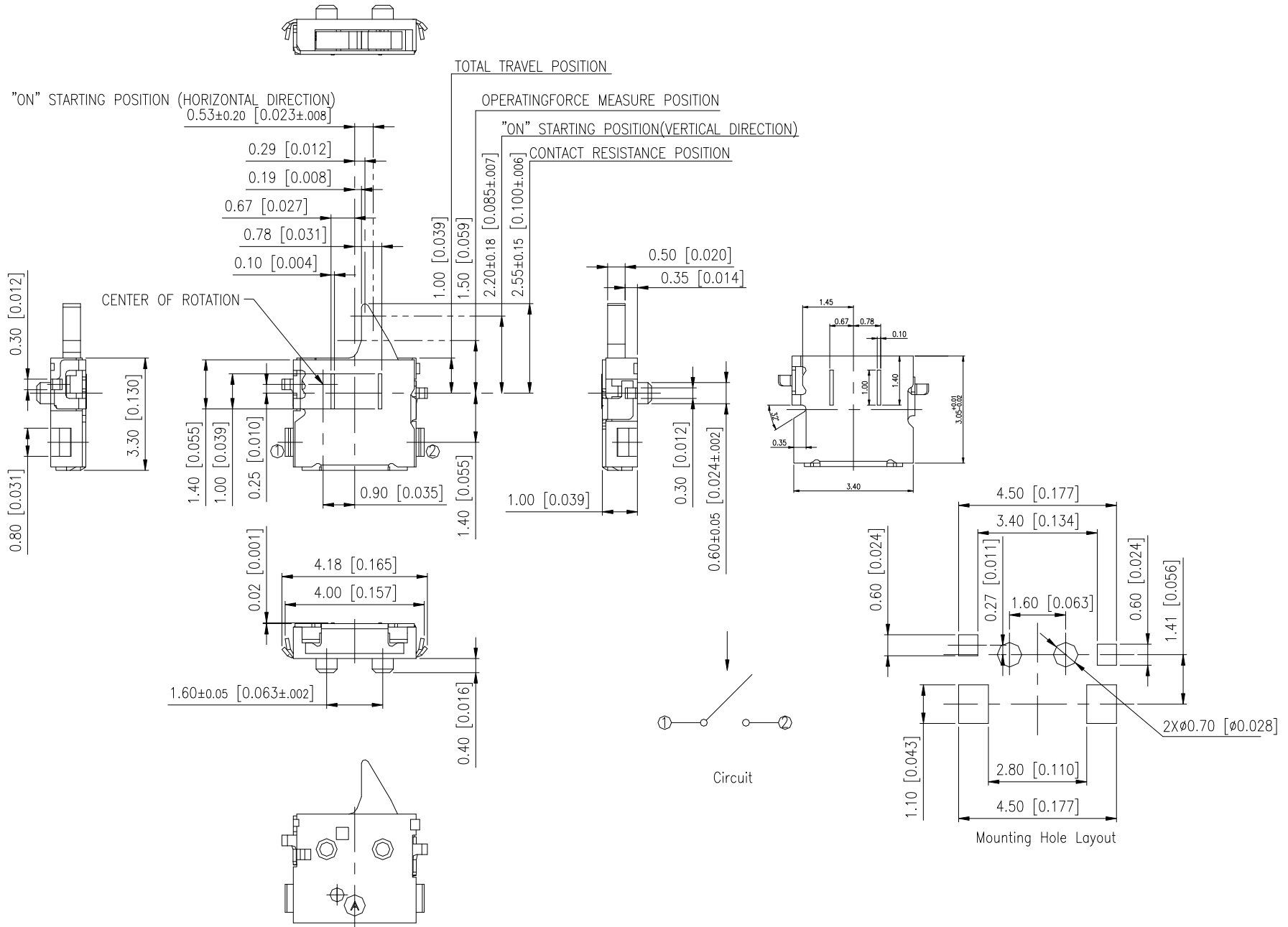


# ELH SERIES



## DIMENSIONS

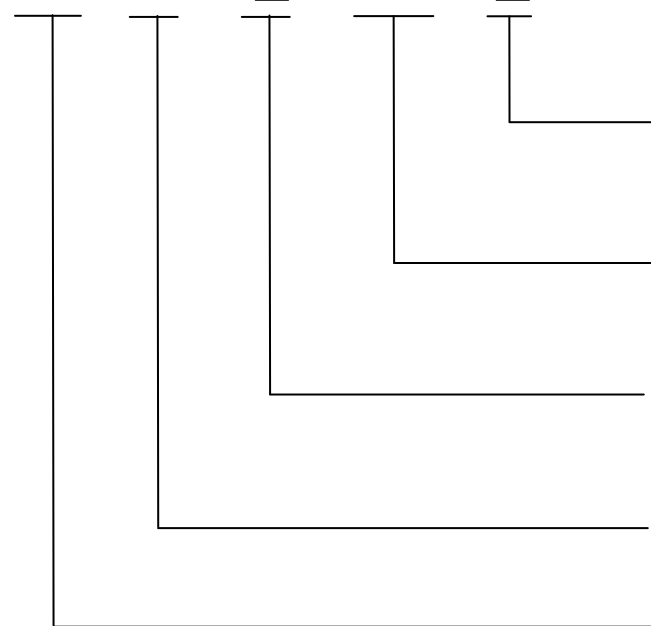
ELH-L-P



General Tolerance :  $\pm 0.2\text{mm}$

## HOW TO ORDER

ELH - L - □ - Q - □



Package :  
T/R = Tape & Reel

Halogen Free

□ = Without Post  
P = With Post

J Terminal SMT

Detector Switch

## SPECIFICATION

### △MECHANICAL

Operation Force: 35gf max.

Stroke: 2.55±0.18 mm

Operation Temperature: -10°C to +60°C

Storage Temperature: -40°C to +85°C

### △ELECTRICAL

Electrical Life: 50,000 cycles

Rating: Min 50μA , 3V DC 、 Max 1mA , 5V DC

Contact Resistance: 2Ω max.

Insulation Resistance: 100MΩ min. at 100 VDC

Dielectric Strength: 100VAC/ minute

## MATERIAL

△STEM: UL 94V-0 LCP High-temp thermoplastic

Color: Black

△BASE: UL 94V-0 LCP High-temp thermoplastic

Color: Black

△COVER : Stainless Steel

△CONTACT : Stainless steel with silver cladding.

△TERMINAL : Brass, Silver Plating.

## SOLDERING PROCESS

For best results, please follow these recommend conditions :

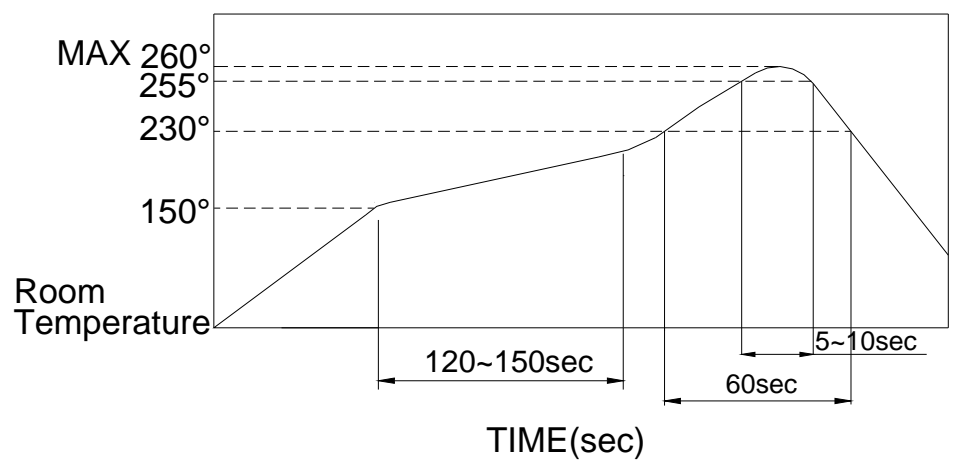
△HAND SOLDERING : Use a soldering iron of 30 watts, controlled at 608°F(320°C) approximately 2 seconds.

△WAVE SOLDERING: Recommended solder temperature at 500°F (260°C) max. 5 seconds for through hole type.

△REFLOW SOLDERING: When applying reflow soldering, the peak temperature or the reflow oven should be set at 260°C max.

△Make sure that there is no flux rise on the surface of The PCB.

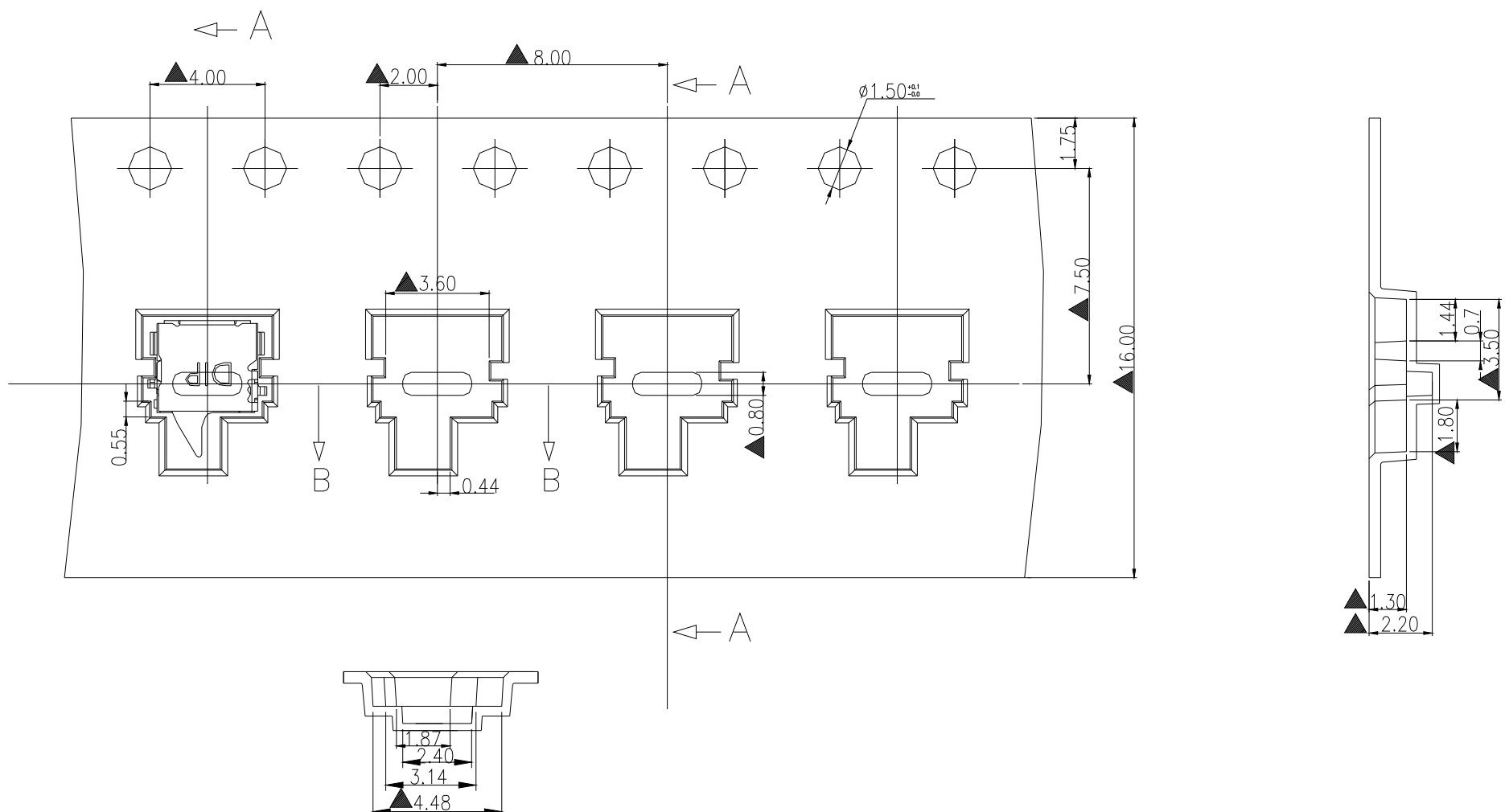
### △Reflow Temperature Profile:



## PACKING

Part Number	Number Per Tube	Number Per Reel
ELH-L-P-V		3800

## ELH-L-P REEL



General Tolerance : ±0.1mm